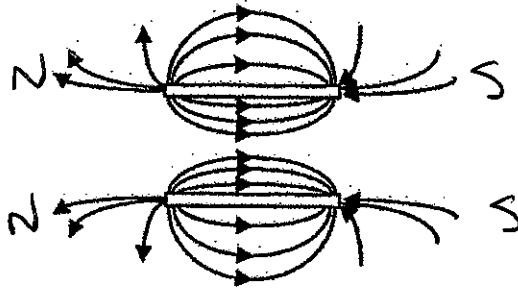


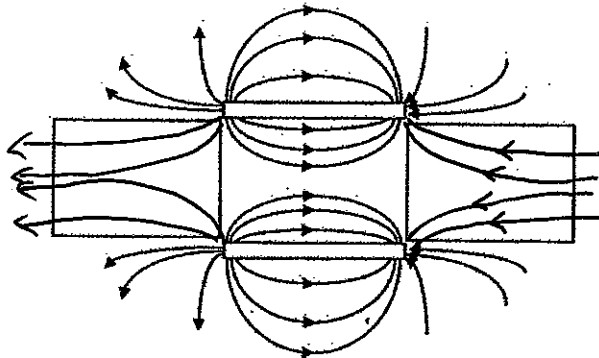
Magnetic Fields Worksheet

1. The following diagram shows two bar magnets near each other. Part of the magnetic field lines is shown.

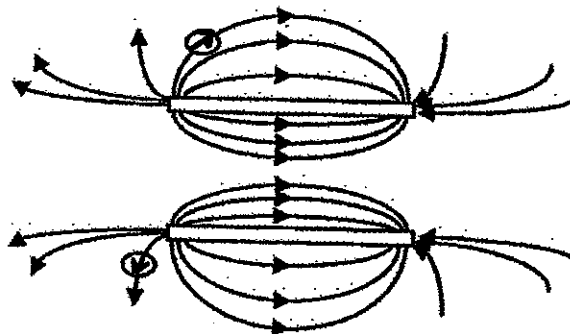
a) from the direction in which the field lines are drawn, indicate which poles are located at each end of the bar magnet.



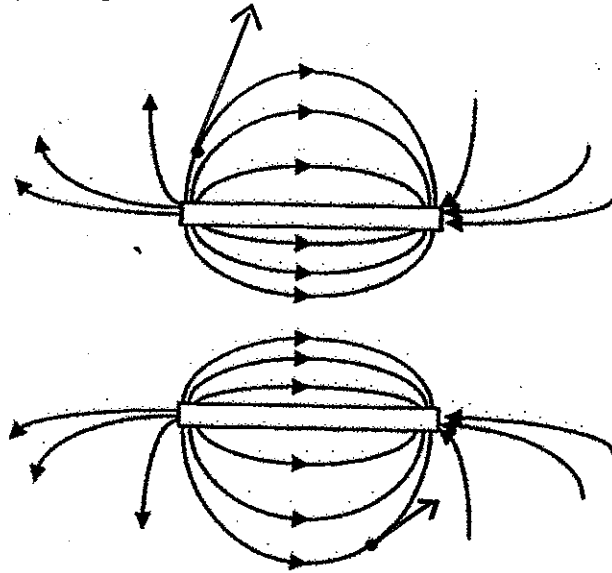
b) The following diagram shows two rectangular regions. Add additional field lines in these areas to show how they would interact with each other.



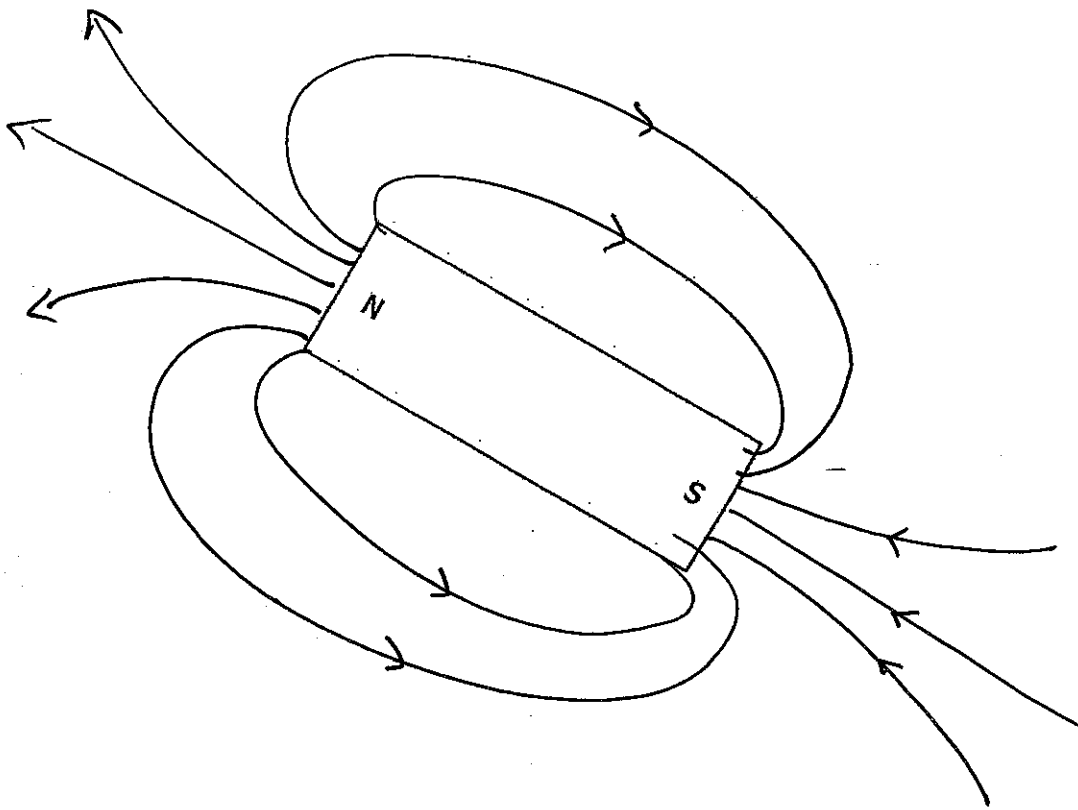
c) The diagram below shows two compasses placed in the magnetic field of this combination of magnets. Indicate the direction in which the compass needle would point at these locations.



- d) The diagram below shows two solid circles. From these circles, draw possible magnetic field vectors. In your drawing, draw one vector longer than the other, indicating which location has the stronger magnetic field.



2. Draw the magnetic field around the following bar magnet. Include eight lines in the diagram.



3. Draw the magnetic field around a horseshoe magnet.

